

SHERPA - Rural Interfaces

Newsletter 4 - August 2020



BLOG

How will rural areas be in the future?

To understand the rural areas and the phenomena that affect their development, it is necessary to look at the major trends in progress and the scenarios that they open for the next 20-30 years. As part of the SHERPA project, a review of a sample of foresight and scenario studies was conducted at European and global levels. The document identifies the high-level megatrends and trends affecting rural areas, and assesses the most relevant drivers and impacts.

[Read more](#)

SHERPA NEWS

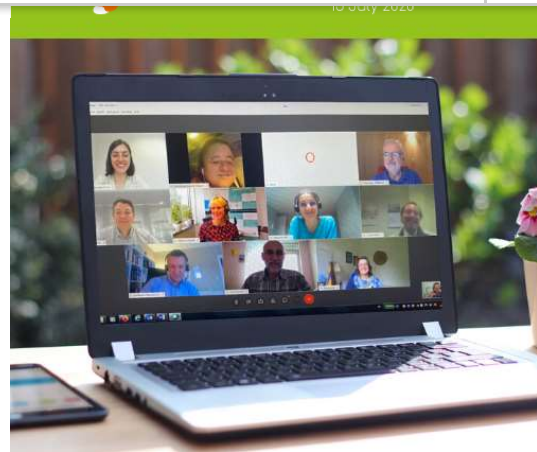
The EU Multi-Actor Platform kicks off

The EU Multi-Actor Platform (MAP) is SHERPA's rural interface established at the European level aiming to engage a mix of key actors from the three target communities (science, society and policy). The EU MAP provides space for debating issues and priorities for the future development of rural areas and formulate



Group took place online on 15 July 2020.

[Read more](#)



Toolbox for stakeholder engagement

One of the challenges of multi-actor platforms projects is how to effectively engage interested stakeholders and actors to ensure a good overview of perspectives and experiences. The SHERPA project has sought to address this by developing a toolbox of useful material that can help engage with multiple rural stakeholders and harness meaningful contributions for the future rural policy.

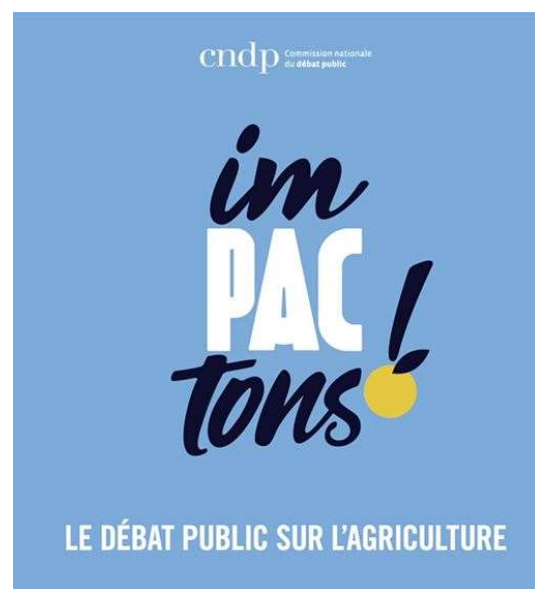
[Read more](#)



France: Public debate on CAP highlights climate and environmental priorities

The National Committee of Public Debate (CNDP), appointed by the French Ministry of Agriculture to lead the public debates on the CAP Strategic Plan, has published a progress report. Analysis of the first round of consultations provided valuable insights from what French citizens think about the future of agriculture, food and the CAP.

[Read more](#)





A tool to evaluate the development of the MAPs

The Multi-Actor Platform Zielone Sqsiedztwo in Poland met for the first time in July to start discussions on the long-term vision for rural areas. During the event, participants debated on the challenges and opportunities for the next 20 years in the Mazowieckie voivodeship; a desirable future for 2040; and obstacles in reaching such a vision.

[Read more](#)



Polish MAP discusses the long-term vision for rural areas

The Multi-Actor Platform Zielone Sqsiedztwo in Poland met for the first time in July to start discussions on the long-term vision for rural areas. Participants debated on the challenges and opportunities for the next 20 years in the Mazowieckie voivodeship, and a desirable future for 2040.

[Read more](#)

EUROPEAN NEWS



Rural areas a part of Europe's recovery

On 7 July 2020, a high-level webinar took place at the initiative of the President of the Renew Europe group in the European Parliament, to exchange and present their vision of a rural Europe as well as highlighting potential directions for contributing to a sustainable and prosperous rural development.

[Read more](#)

Have your say! Roadmap for a long-term vision for rural areas

roadmap for the adoption of a 'Communication on the Long-term vision for rural areas', foreseen for 2021. The consultation is open for feedback until 9 September 2020.

[Read more](#)



Have your say!
Roadmap for a Long-term vision
for rural areas



Opportunities for rural areas in times of COVID-19

The OECD published a policy note on the implications of coronavirus crisis for rural development. The document analyses economic effects of the health crisis in rural regions, identifying the opportunities and challenges derived from it, and proposing recommendations for governments to leverage those opportunities.

[Read more](#)

Food Supply Chains and COVID-19: Impacts and Policy Lessons

The current health crisis has placed unprecedented stresses on food supply chains, with bottlenecks in farm labour, processing, transport and logistics, as well as momentous shifts in demand. The OECD has published a document providing guidance for policy response to COVID-19 impact on the food supply chains.

[Read more](#)

Food Supply Chains and COVID-19: Impacts and Policy Lessons



Consultation on the evaluation of EU farm policy

In July 2020, the European Commission launched the public consultation on EU farm policy – evaluation of its impact on



2020. The feedback received will contribute to an upcoming Commission staff working document on the evaluation of the CAP impact on natural resources.

[Read more](#)

Using science for policy-making

The Joint Research Centre (JRC) of the European Commission, has recently published a book sharing all the knowledge gathered throughout the years on how to bring science to the attention of policy-makers. In addition to the handbook, further materials have been made available, such as a list of top 10 tips for researchers and a training course material on how to achieve policy impact.

[Read more](#)



Science for Policy Handbook



Edited by
Vladimír Šucha and Marta Sienkiewicz



Thematic Group

#Rural2040

Long term rural vision



ENRD Thematic Group on Long-term vision for rural areas

The ENRD is launching a new Thematic Group aiming to contribute to the 'Long-term vision for rural areas' that is being developed by the European Commission. The group will gather informed and engaged stakeholders from different parts of Europe. The call for experts to become a member of the new Thematic Group is open until 28 August 2020.

[Read more](#)



Desira

Rural Digitalisation Forum: first meeting

The Rural Digitalisation Forum (RDF) is a platform, set-up within the DESIRA project, bringing together a wide range of stakeholders working on digitalisation of rural areas. The first meeting of the RDF will be online on 10 September 2020. Participants will be able to share their experiences, ideas and recommendations regarding digitalisation in agriculture, forestry and rural areas.

[Read more](#)

RURALIZATION

Impact of COVID-19 on young people on rural areas

Ruralization is planning to host a webinar on 15 September 2020 on the impact of COVID-19 on young people in rural and urban areas. The webinar will discuss the positive and negative effects of the pandemic and differences between urban and rural areas, sharing resilience stories and examples of young people from both rural and urban areas.

[Read more](#)

EVENTS

10 Sept. 2020
online

First meeting of the Rural Digitisation Forum

15 Sept. 2020
online

Impact of COVID-19 on young people from rural areas

22-24 Sept. 2020
online

European Research and Innovation Days

24-25 Sept. 2020
online

Agriculture and Food Summit 2020

15-16 Oct. 2020
online

Farm to Fork Conference – Building sustainable food systems together

05-22 Oct. 2020
online

European Week of Regions and Cities

30 Nov. - 01 Dec. 2020
Brussels, Belgium

SHERPA Annual Conference

Don't miss any updates! Click on the icons below and follow the project online! #ruralinterfaces #SHERPA2020



SHERPA receives funding from the European Union's Horizon 2020 research and innovation programme under grant agreement No. 862448. The content of this document does not reflect the official opinion of the European Union. Responsibility for the information and views expressed therein lies entirely with the author(s).

Copyright © 2020 AEIDL, All rights reserved.

Want to change how you receive these emails?
You can update your preferences or unsubscribe from this list.

