



RURITAGE

Overview

- Rural regeneration through systemic heritage-led strategies
- Horizon2020 - Innovation Action
- Start date: 01 June 2018
- Expected end date: 31 May 2022
- University of Bologna leads a consortium of 38 partners



Claudia de Luca

30 November 2020

SHERPA Annual Conference



SHERPA receives funding from the European Union's Horizon 2020 research and innovation programme under grant agreement No. 862448.

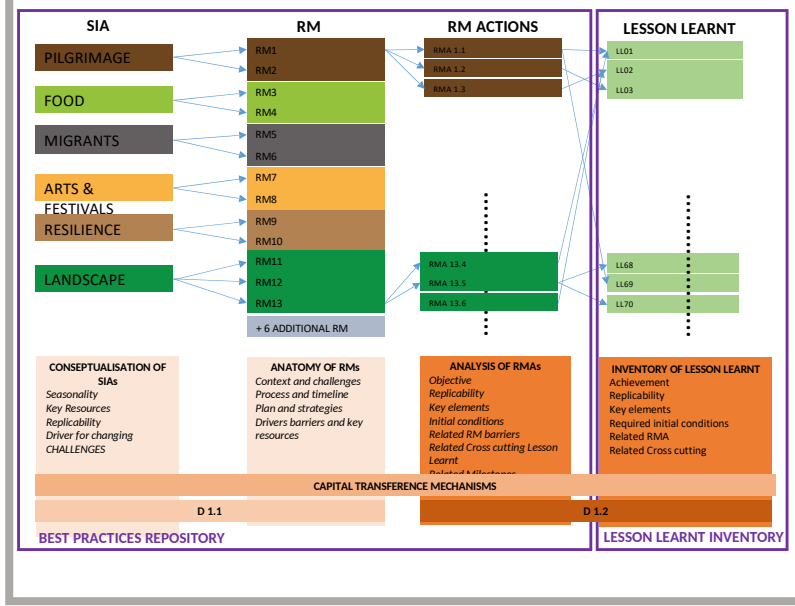
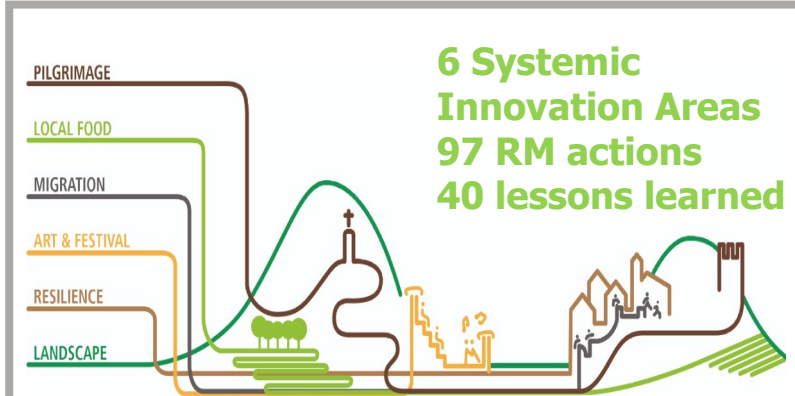


@ruralinterfaces



What we have done?

KNOWLEDGE BUILDING



KNOWLEDGE TRANSFER



CO-DEVELOPMENT OF REGENERATION STRATEGIES



OUTREACH

7 public webinars
 (+3 internal +4 ENP+2 Ars)



Cultural and Natural Heritage as a tool for rural regeneration and social inclusion of migrants

During its edition, several RURITAGE partners shared their experience in building more inclusive and diverse communities. Experts from IAHIG Planning and Regeneration research group introduced the obligation to include migrant with focus on rural areas to demonstrate that it is possible to contribute to the social inclusion of marginal communities, migrants and refugees. Partners from RURITAGE Migration (Iria Ribeiros - Field Office in Italy, and the National History Museum of the Louvre-Paris-Field Office in Greece) shared their good practices on migrants' housing and integration. Representatives from the Gas Natural Regeneration-Germany (UNESCO Global Geopark in Germany, one of the 6 RURITAGE replicators), provided insights on how they replicate 6 key RURITAGE methodologies to use CH as a sustainable tool for socio-migrant integration in the area.

1 Professional Master course



Programme type	Place of teaching	Language	Departments	Type of access	Required fee
One year Professional master's degree (90 ECTS)	Turin, Italy; Crete, Greece; Bologna, Italy/Online	English	Joint between University of Bologna and the Polytechnic University of Turin	Second / single cycle degree Requirement details	5,500.00 Euro Scholarship could be available. Please contact the Master's Director for more information.

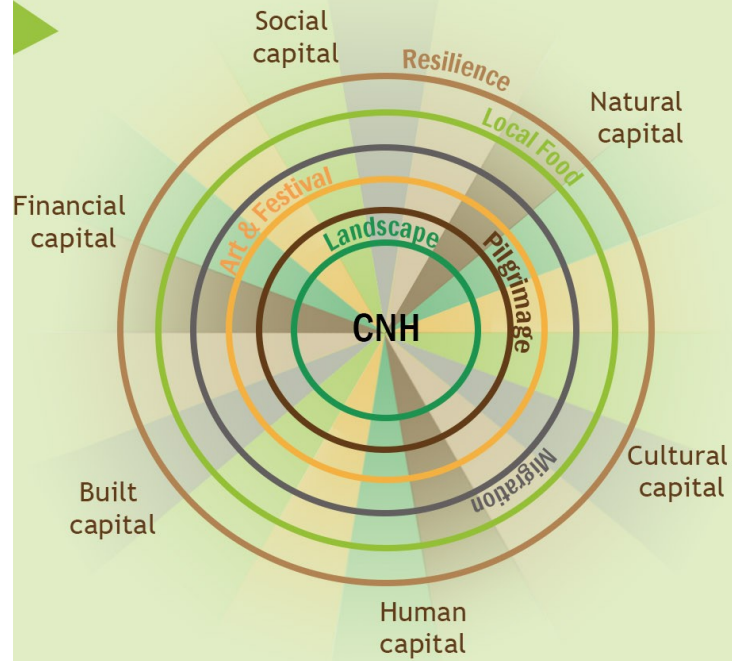
2 Summer (and winter) schools





What did we learn?

6 Systemic Innovation Areas Capitals



3 Area of actions

POLICY

KNOWLEDGE

FUNDING

8 RECOMMENDATIONS



Diversify investments in rural areas, to support the creation of high-skilled and creative jobs



Enhance and protect natural capital



Make culture the driver for sustainable rural growth



Boost innovation and local entrepreneurship



improve physical and digital accessibility of rural areas



Develop rural-centered research and innovation



Enlarge the scope of EU initiatives to include rural areas



Promote a multi-stakeholder governance and citizens' participation

www.ruritage.eu

#Ruritage



www.facebook.com/ruritage



www.twitter.com/ruritage



www.instagram.com/ruritage