



MOVING
MOUNTAIN VALORISATION THROUGH
INTERCONNECTEDNESS AND GREEN GROWTH

MOVING Community of Practice (CoP)

María del Mar Delgado-Serrano (UCO)

2 December 2021

SHERPA WEBINAR: Beyond the policy brief – How local actors engage in the policy process

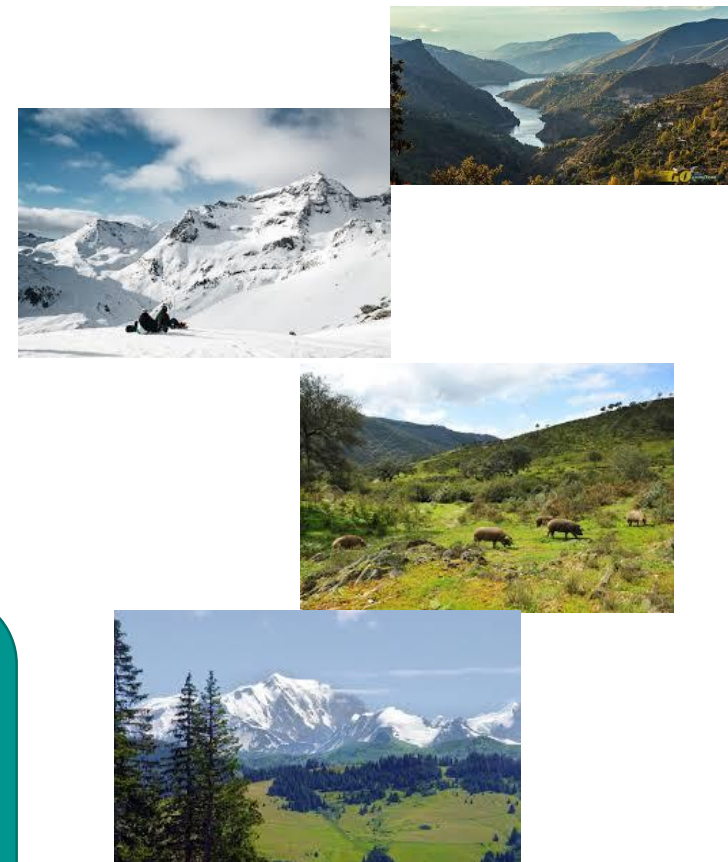


MOVING receives funding from the European Union's Horizon 2020 research and innovation programme under grant agreement No. 818194. The content of this document does not reflect the official opinion of the European Union. Responsibility for the information and views expressed therein lies entirely with the author(s).

MOVING – Main objective

- Mountain covers 36% of Europe area and hosts 16% of Europe's population
- Represent great socio-economic and cultural diversity
- **Fragile environments** threatened by different pressures (climate change, demography, isolation, bargaining power, ...)
- **Disparity of knowledge and data about mountain local realities** (climate change's impacts, demographic trends, socio-economic drivers, ...)
- Need for a **new generation of policies** to boost **resilience** and **sustainability**.

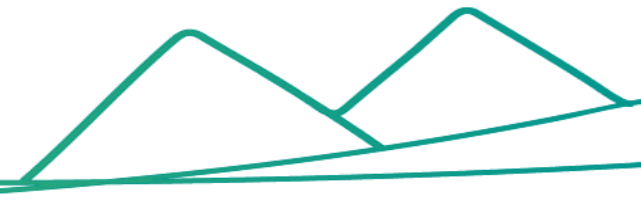
To **build capacities and co-develop** - in a bottom-up participatory process with value chain actors, stakeholders and policy makers - relevant **policy frameworks** across Europe for the establishment of **new or upgraded/upscaled Value Chains** that contribute to **resilience and sustainability of mountain areas**.



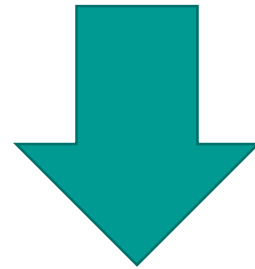
Why a Community of Practice?



- ✓ Sustainability transformations require unprecedented levels of collaboration, coordination, learning, and commitment across disciplines, sectors, and scales.
- ✓ We need to develop functioning mechanisms for legitimate, transparent, and constructive ways of creating synergies across knowledge systems (Tengö et al. 2014)



Novel *transdisciplinary* approach that can enable collaborative development of actionable and solution-oriented knowledge



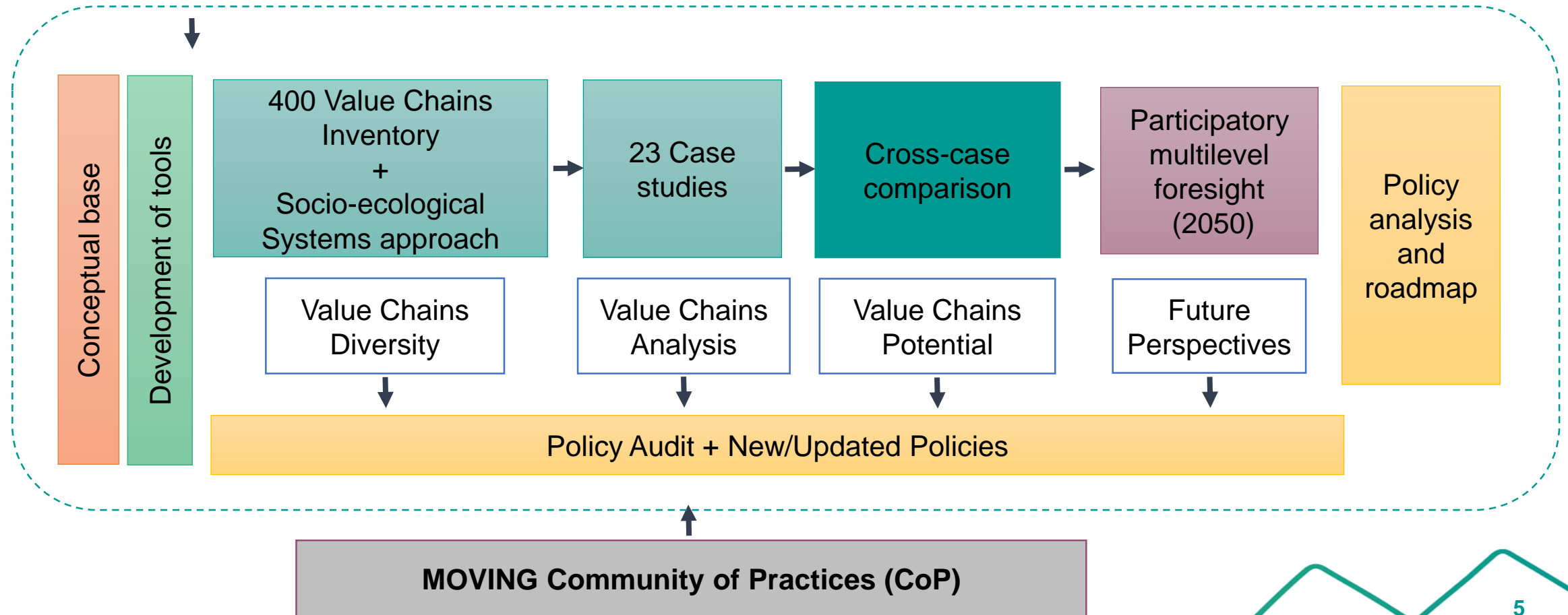
(Cundill et al 2015, Wenger et al 2002)



MOVING Approach



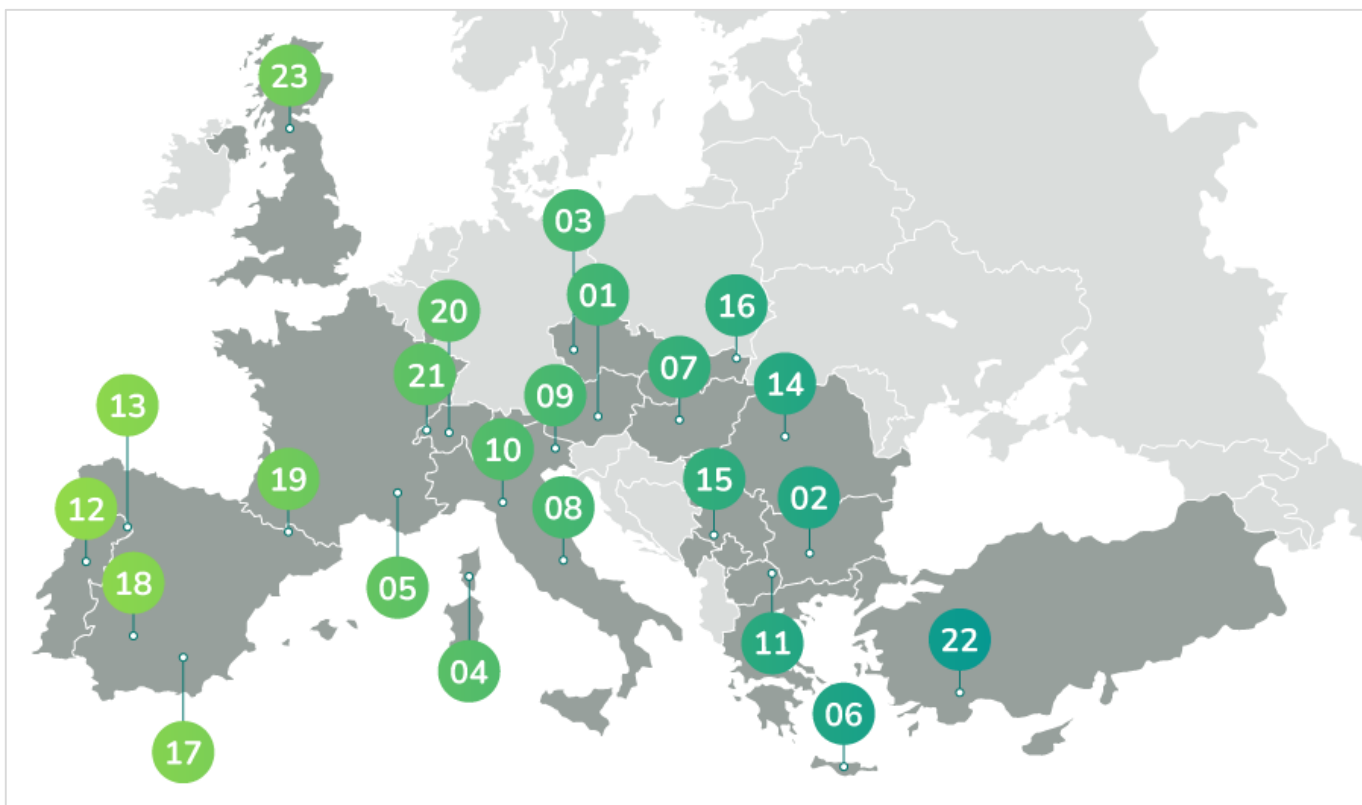
MAPs engagement



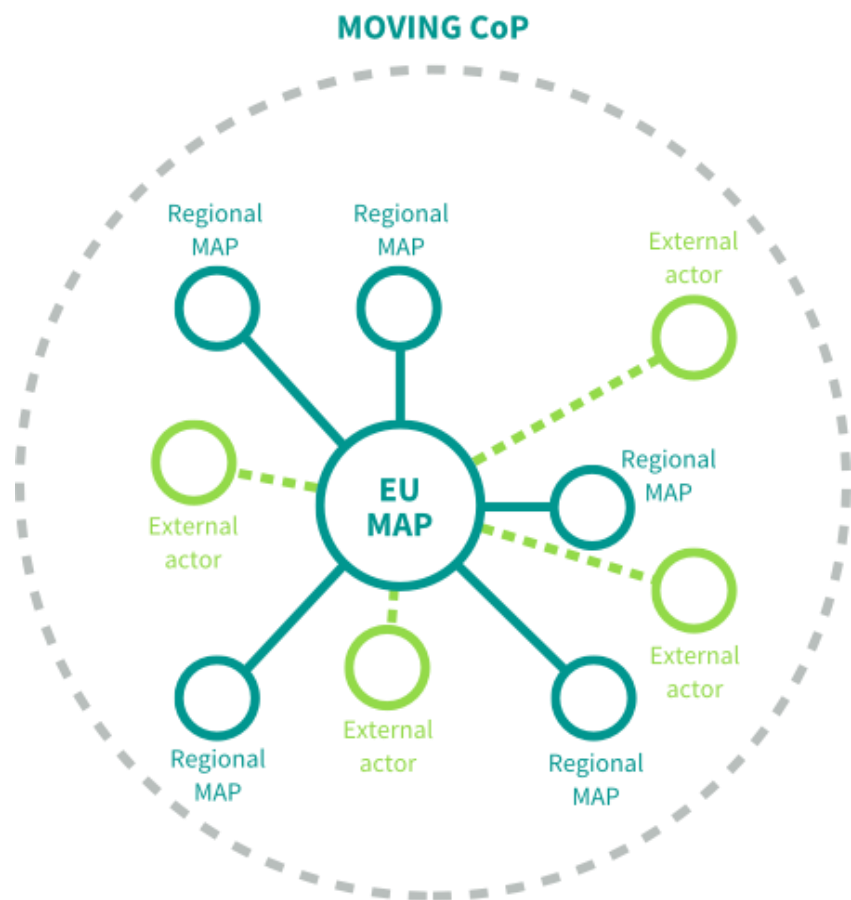
MOVING Reference Regions



The **23 Mountain Reference Regions** are distributed in 16 European and neighbouring countries.



MOVING Community of Practice



The MOVING COP is a European-wide Science-Society-Policy interface and **nested structure** built upon:

- 23 regional MAPs established in the 23 Reference Regions
- 1 European-level Multi-Actor Platform (EU MAP)

Three pillar of the CoP



1. Domain

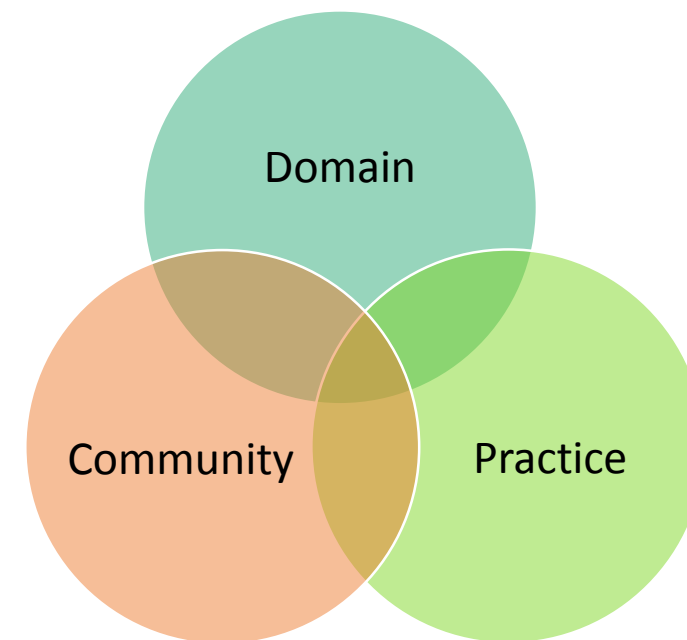
- The group has an identity defined by a shared domain of interest (Mountain VCs)
- Members have commitment/attachment to the domain

2. Community

- Members engage in joint activities and discussion
- Build relationships and trust, and learn from each other

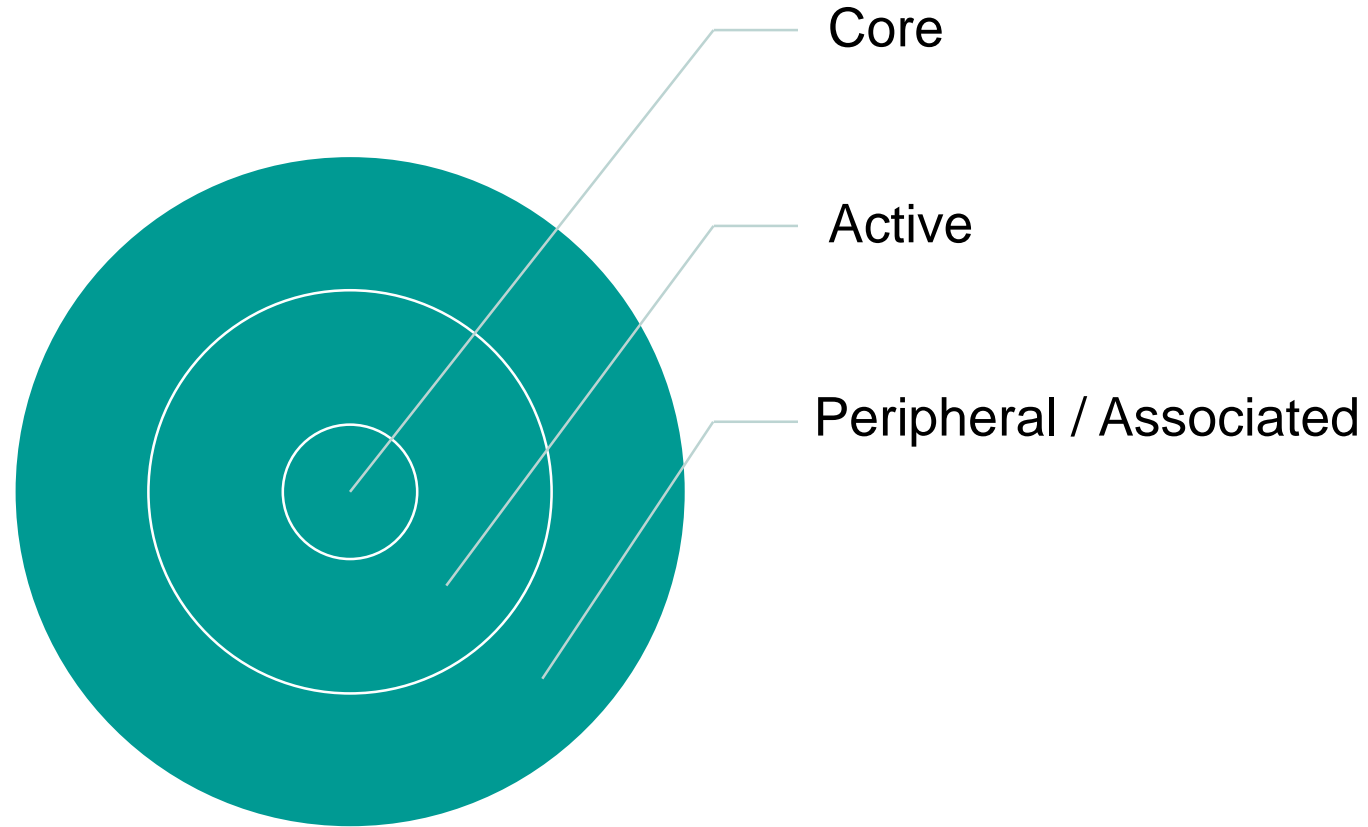
3. Practice

- Not just a community of interested-people
- Develop a shared repertoire of resources (experiences, stories, tools, ...)
- With the practice, many resources are developed by the community



Wegner et al 2002; Wegner-Trayner and Wegner-Trayner, 2015

Different levels of engagement within CoP



Metzger et al 2019



Expected results



- 1. Participatory** vulnerability analysis of the key land systems, which are key capital to the mountain value chains. Collectively we identify the indicators of change, the perception of the actors about the change, and the adaptation and resilience strategies to cope with the changes.
- 2. Participatory** appraisal of vulnerability and performance of value chains. We aim to understand the current performance of the 23 VCs through different perspectives, and to discuss future strategies to improve their resilience and sustainability.
- 3. Participatory** comparative assessment and critical benchmarking of the VC clusters. Thematic clusters of VCs will be created, and the vulnerability, resilience and sustainability performance of these thematic clusters will be performed.

Expected results



- 4. **Participatory** multi-level foresight analysis from local to European levels. This analysis will identify strategic options (possible responses) to the challenges identified.
- 5. **Participatory policy** **policy roadmap will be developed** **strategic options.**
- 6. Opportunities and challenges will be identified to fill the gap between CoP concepts and their implementation.

Final MOVING output: Policy analysis and roadmap

Interactively with the CoP a clear strategic approach will be developed for the modernisation of multi-level policy tools and approaches to enable the collectively (through the CoP) identified repertoire of strategic options.

A policy roadmap will be delivered in the form of easy-to-use strategic programming tools and quick-start policy design toolkit for policy makers.

Become part of the EU MAP





Expression of Interest for the EU Multi-Actor Platform

Name (Required)

Surname (Required)

Organisation

Type of Organisation/Stakeholder (Required)

Email Address (Required)

Country (Required)

Have you participated in the activities of any of our MOVING Regional Multi-Actors Pla



Join!

<https://www.moving-h2020.eu/eu-multi-actor-platform/>



MOVING
MOUNTAIN VALORISATION THROUGH
INTERCONNECTEDNESS AND GREEN GROWTH

Thank you!



MOVING receives funding from the European Union's Horizon 2020 research and innovation programme under grant agreement No. 818194. The content of this document does not reflect the official opinion of the European Union. Responsibility for the information and views expressed therein lies entirely with the author(s).