

SHERPA - Rural Science-Society-Policy Interfaces



Tuscany MAP

Sabrina Arcuri, University of Pisa

31 January 2022

SHERPA Annual Conference



SHERPA receives funding from the European Union's Horizon 2020 research and innovation programme under grant agreement No. 862448.



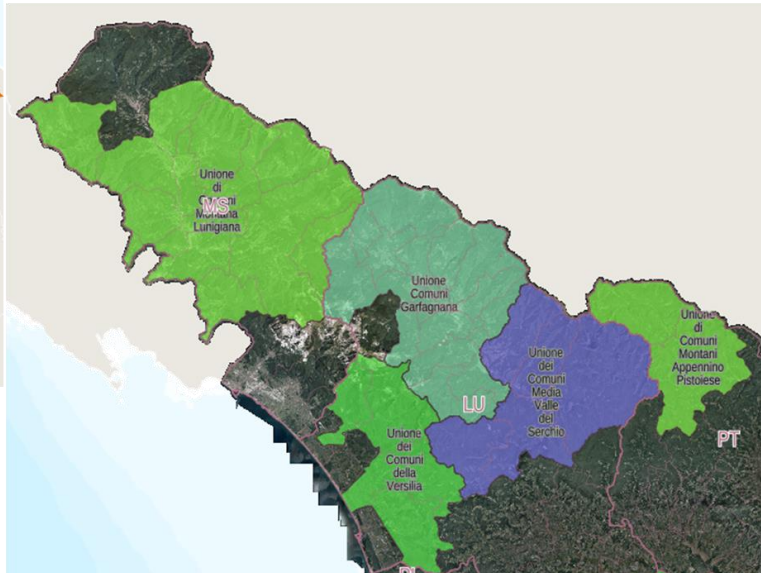
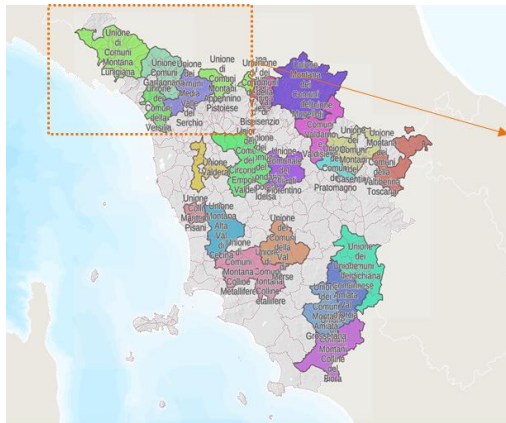
@ruralinterfaces



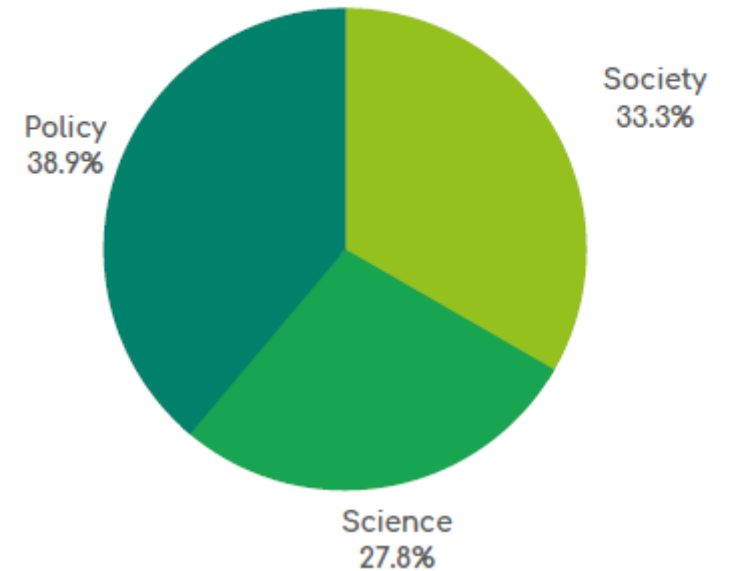


MAP intro

- Heterogeneity of the rural landscape in Tuscany
- Decision to zoom into a specific (but still very broad) sub-regional area: Garfagnana, Lunigiana, Media Valle del Serchio, Appennino Pistoiese for the 2nd MAP cycle
- Alignment with existing policy cycles: the National Strategy for Inner Areas (SNAI)



MAP membership:





Main messages from the vision

- **Diversity but not disparity**, as the right of all citizens to have access to basic services forms the essence of (individual and collective) wellbeing and economic development, making the lack of such services a matter of (in)equality and spatial (in)justice.
- **Managed rural revitalisation**, which does not just translate into bringing new residents to live in these areas but highlights the urgency of developing policies *with*, and not *for*, rural areas.
- **Creation of an enabling environment** for rural communities to prosper, act and regenerate, intended as both the outcome of, and precondition for, other priorities.



What is required to achieve the LTVRA?

Continued work on the preconditions for development: essential services (schools, health and social care, mobility and the safeguard of the territory), prioritising residents' needs

A pact among old and new residents, individuals and SMEs as the foundation stone of each community

Retaining added value from emerging economic opportunities in rural areas

Matching education and training programmes with local resources and needs

Enhancing the knowledge base on the territory: strengths and weaknesses, in terms of human, social and institutional capital

Supporting and reinforcing available forms of innovative governance, and building forms of multi-level cooperation

THANK YOU

**Rural Science-Society-Policy
Interfaces**



Get informed through the SHERPA Newsletter

Subscribe

Follow us:



www.rural-interfaces.eu



[@ruralinterfaces](https://www.facebook.com/ruralinterfaces)



[@ruralinterfaces](https://www.twitter.com/ruralinterfaces)



SHERPA receives funding from the European Union's Horizon 2020 research and innovation programme under grant agreement No. 862448.