

SHERPA - Rural Science-Society-Policy Interfaces



Hungarian AKIS MAP

Viktória Vásáry,
Institute of Agricultural Economics



1 February 2022

SHERPA Annual Conference



SHERPA receives funding from the European Union's Horizon 2020 research and innovation programme under grant agreement No. 862448.



@ruralinterfaces



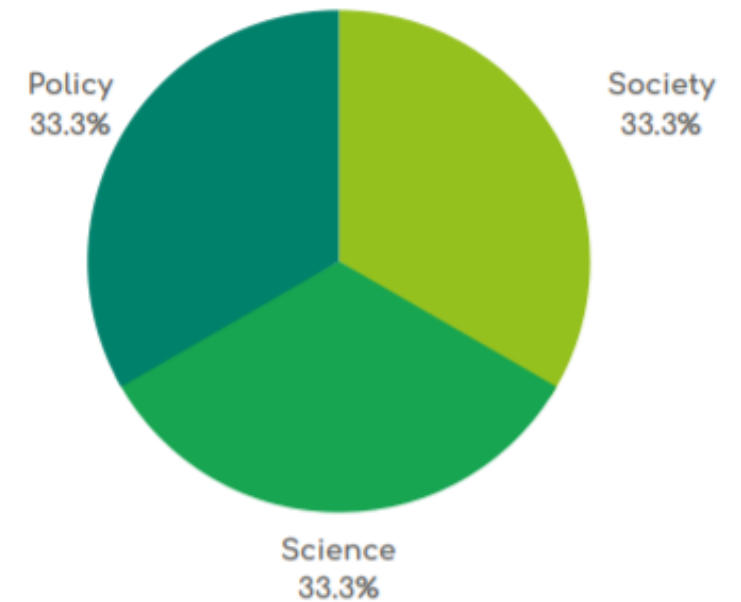
Hungarian AKIS MAP

Core group: Agricultural Knowledge and Innovation System (AKIS) sub-working group established by HuMA with the purpose of facilitating the Common Agricultural Policy strategic planning process.

Why is the MAP national?

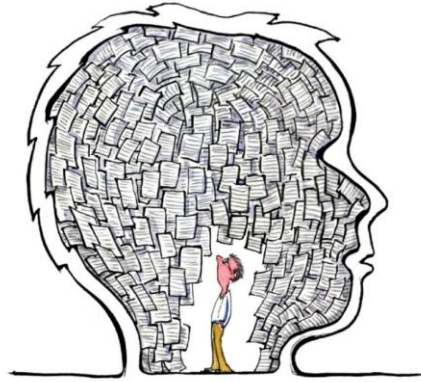
- due to its size Hungary is considered one region in several policy aspects
- the topic itself – **Agricultural Knowledge and Innovation System is a horizontal issue**, also embedded into the CAP strategic planning
- 2020: focus on exploring what was the vision for the future of rural areas in terms of **digitalisation**
- 2021: foresight exercise
- 2022: Topic: Digitalisation, smart ruralities, including rural-urban relations.

MAP membership:





MAP experiences and insights



What good is knowledge
without action?

HiltingArtist.com

The MAP was an additional forum for the AKIS sub-working group to discuss aspects of digitalisation

- Digitalisation = a cross-cutting objective of the CAP strategic plan – the MAPs actions and the content of the Position Papers were fed into the situation analysis, SWOT-analysis and needs assessment
- **Exploitation of synergies:** The platform was linked to an ongoing process.
- Focus put on creating mutual understanding among actors **to build trust.**



What can be done better?

Harmonisation/synchronisation of actions carried out by different groups/platforms related to a certain topic

Central government needs to be **involved in discussions/** or at least informed about actions carried out by groups/MAPs **from the very beginning**

Focused facilitation is required for bottom-up approaches so that they can find their ways to the decision-makers more efficiently

More frequent consultation of SSP representatives should take place at each stage of policy making: development, adoption, implementation, monitoring and evaluation (broad public consultations even at an early stage)

Better communication: The government and individual authorities also need to communicate more actively with the general public on issues of concern.

Problem Solving/Decision Making



THANK YOU

**Rural Science-Society-Policy
Interfaces**



Get informed through the SHERPA Newsletter

Subscribe

Follow us:



www.rural-interfaces.eu



[@ruralinterfaces](https://www.facebook.com/ruralinterfaces)



[@ruralinterfaces](https://www.twitter.com/ruralinterfaces)

