

Planning for a Vibrant Rural Future

Gabriel O'Connell – MID/MAC

8 November 2022



Monaghan



Ireland



The SHERPA and POLIRURAL projects received funding through the European Union's Research and Innovation programme, Horizon 2020.



EUROPEAN WEEK OF
REGIONS & CITIES



#EURegionsWeek



Aligning with High Level Drivers /Objectives



EUROPEAN WEEK OF
REGIONS & CITIES

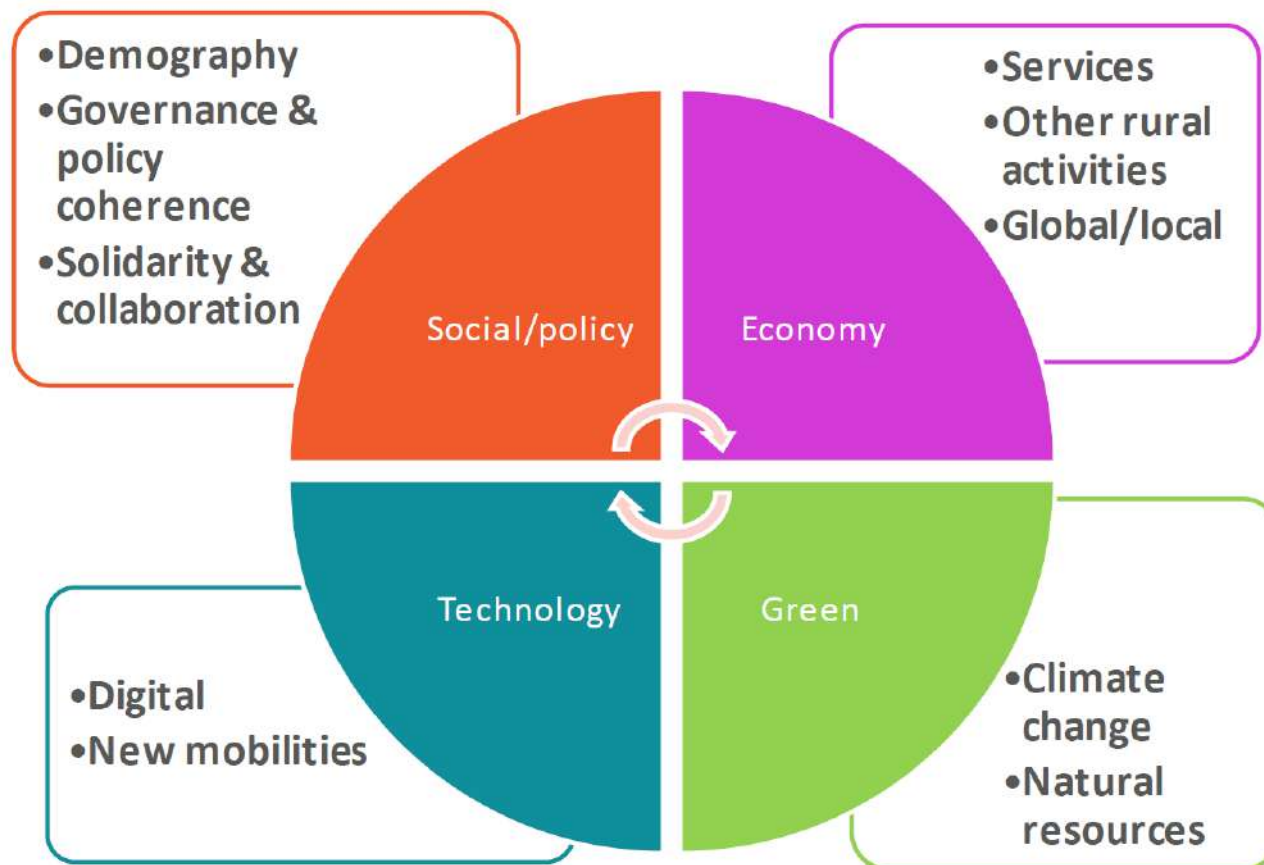


#EURegionsWeek



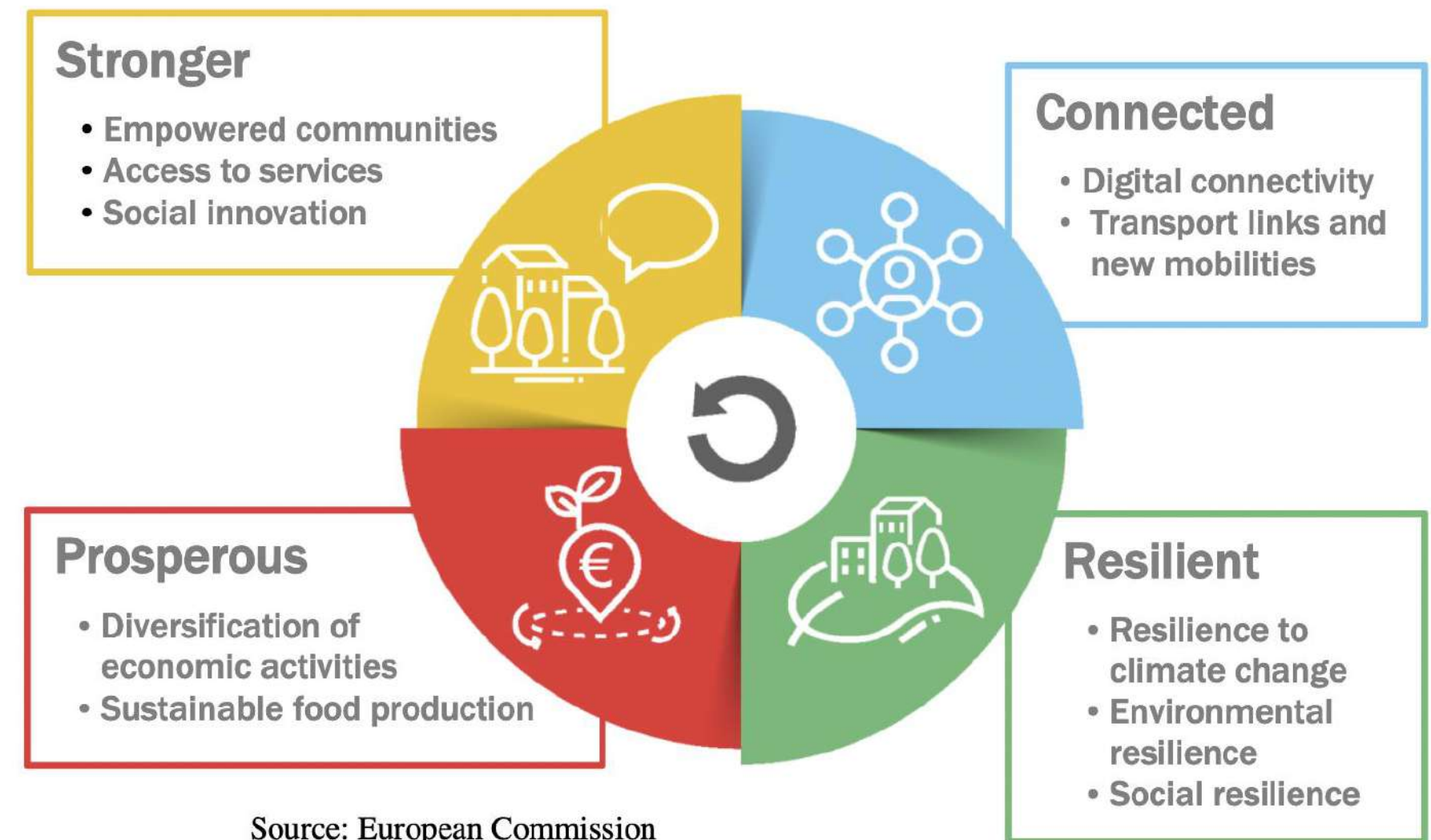
Drivers & Rural Challenges – LTV4RA

Figure 1 – Top-10 drivers shaping rural areas for 2040: A selection by ENRD Thematic Group



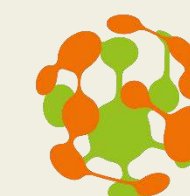
Source: European Commission, SWD (2021) 166.

Where we want to be – EUs LTV4RAs by 2040



Source: European Commission

But how do we get there - implementation?



SHERPA



POLIRURAL

What have we learned in PoliRural



EUROPEAN WEEK OF
REGIONS & CITIES



#EURegionsWeek



- Rural people **often feel excluded from policy decisions** that impact their future
- Rural **areas face specific challenges** – viable farming methods, decarbonisation of industry & society, public services, access to markets and scale
- Rural areas have a future – with the right policy choices and implementation, **rural areas can be vibrant places to live and work**
- **Tools** are needed to **ensure rural people have a real say in the vision** for their rural areas, **interpreting policy**, and **planning suitable actions** for local implementation
- We must **move from overly centralised RD policy** to one which **truly is informed by the voices of rural stakeholders** i.e. CAP, Green Deal, Climate Change and Biodiversity
- **PoliRural, LEADER demonstrate the value of bottom-up**, meeting top down in policy decisions – **but these tools need to be more widely embraced by policy makers.**

Focus on Effective Implementation



EUROPEAN WEEK OF
REGIONS & CITIES



#EURegionsWeek



- **EU policy i.e LTV4RA/ EU Mission** have fed into our **Vision & Action Plan** for our pilot
- But **now for delivery?** – we need the **local autonomy and agency** to move to implement
- Once you engage your community, build expectations – **they must be empowered to act**
- **State cannot do it all**, empowered civic society groups / NGOs needed to assist in delivery
- **Bottom-up methods** like PoliRural, LEADER / CLLD are working – **need to be used more**
- We need access to **technical support elements** for complex work areas i.e EIB ELANA
- NGOs need direct **access to new EU funding facilities** for rapid implementation
- We need full use of **Multi-fund approach in CLLD**, to improve integrated Rural Dev





EUROPEAN WEEK OF
REGIONS & CITIES



#EURegionsWeek



Thank you!



rural-interfaces.eu



polirural.eu

