

SHERPA

Final Conference 2023



1-2 June 2023

Hosted by



**European Committee
of the Regions**



SHERPA has received funding from the European Union's Horizon 2020 Research and Innovation Programme under Grant Agreement No. 862448. The content of the document does not reflect the official opinion of the European Union. Responsibility for the information and views expressed therein lies entirely with the author(s).

SESSION 2:
Contribution to the wider policy framework



#SHERPAConference

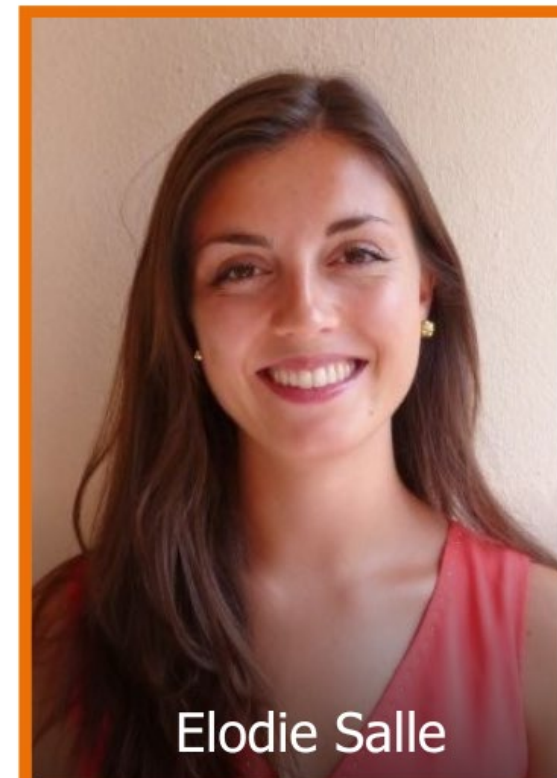


Welcome to Day 2 of the SHERPA Final Conference



Olivier Chartier

Ecorys



Elodie Salle

Ecorys



Current policy framework

Total Multiannual Financial Framework:

€1.2 bn + €800 bn in Next Generation EU

Common Agricultural Policy

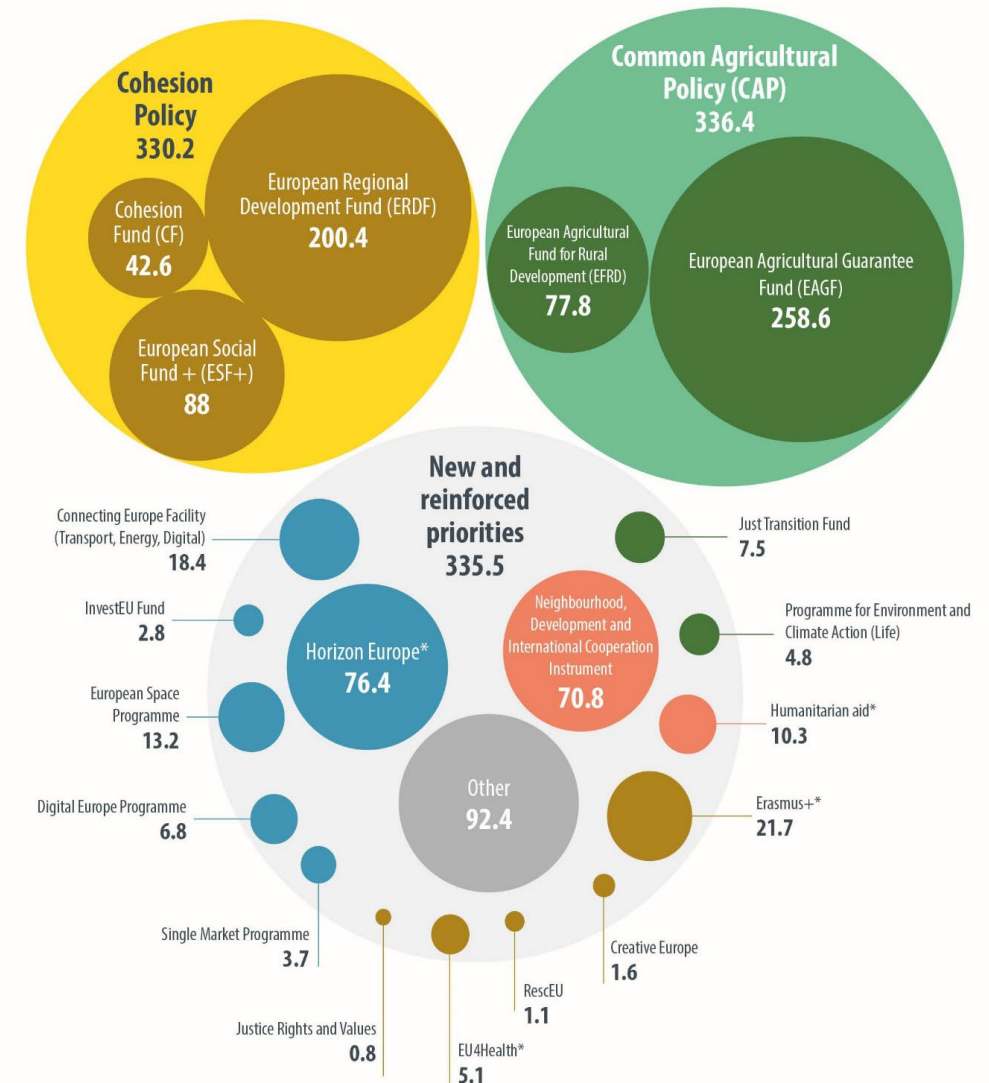
- CAP Strategic Plans, 9 Specific Objectives (SO)
 - SO7 on generation renewal
 - SO8 on vibrant rural areas
- Ring fencing: LEADER \geq 5% EAFRD budget
- Actual LEADER budget c.7.7% EAFRD budget

Cohesion Policy

- Partnership Agreements, Operational programmes, five policy objectives
- E.g. support job creation in rural areas

* *LEADER no longer governed by Common Provisions Regulation*

All amounts in € billion (2018 prices)



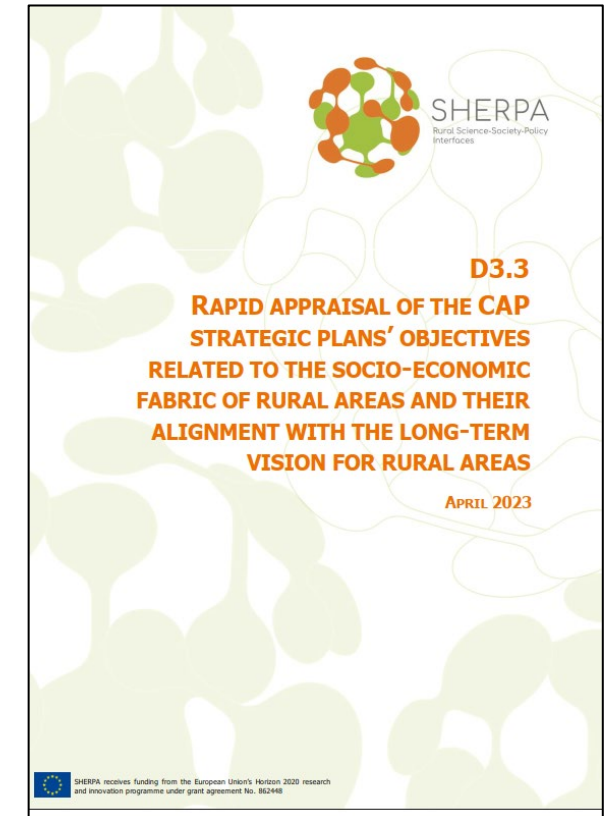


Rural areas in the CAP Strategic Plans

- Approximately 10% total CAP budget for rural areas
- Nine countries refer to LTVRA in CAP-Strategic Plans (CSPs)

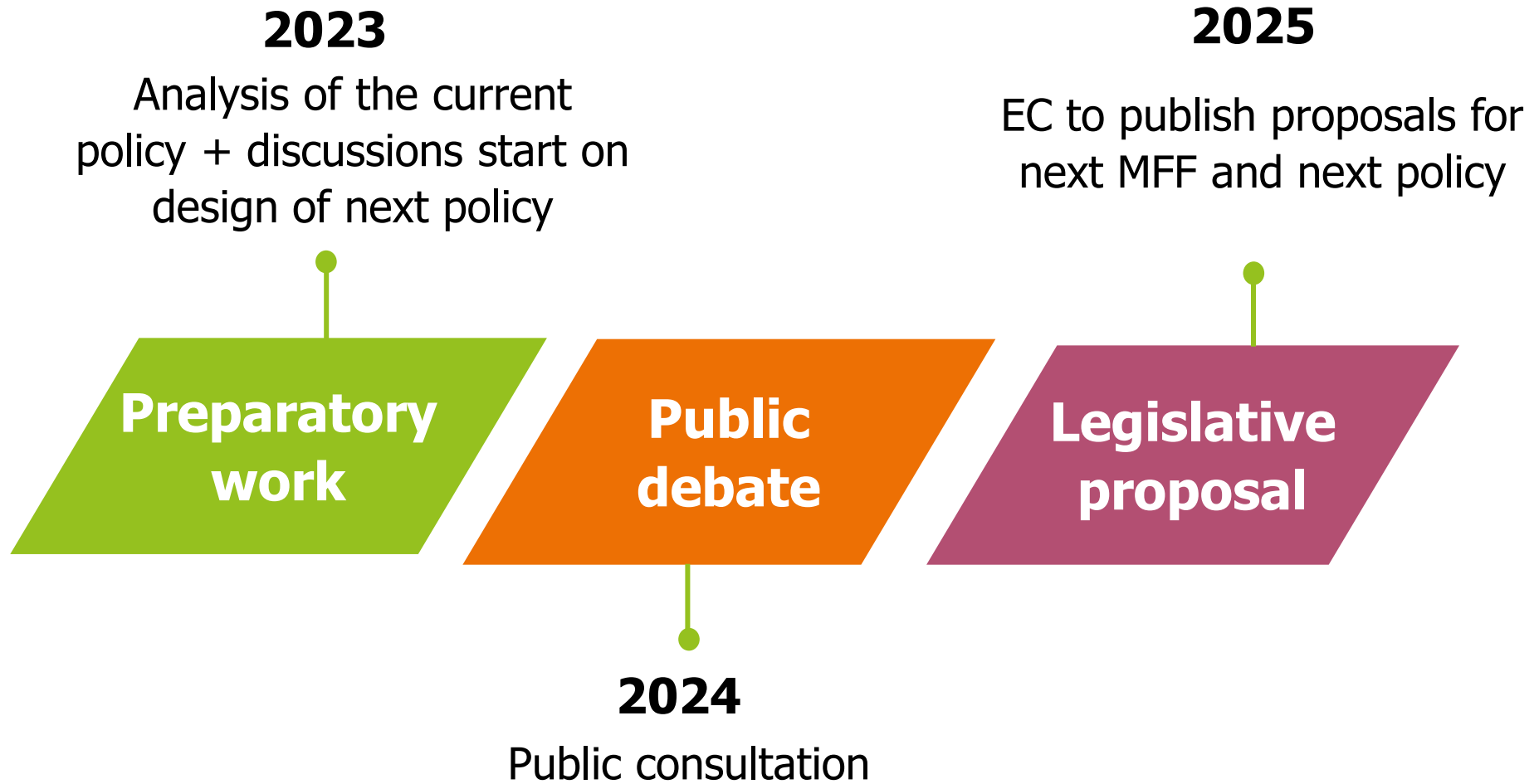
Lessons learned

- Ring fencing works (12 countries allocated less than 6% of EAFRD to LEADER)
- Farming economy perceived as backbone of vibrant rural areas in many CSPs
- LTVRA came too late in the policy process to influence the design of the CSPs
- LEADER and Smart Villages perceived as main interventions to operationalize LTVRA in CSPs





Timing of the next reform





The way forward: three policy options

1) Business as usual

- CAP-Strategic Plan with rural ring-fencing for LEADER
- Partnership Agreements in Cohesion Policy

2) Rural acceleration

- Structure the next policy with LTVRA building blocks
- Ring-fencing for four rural interventions

3) A new model

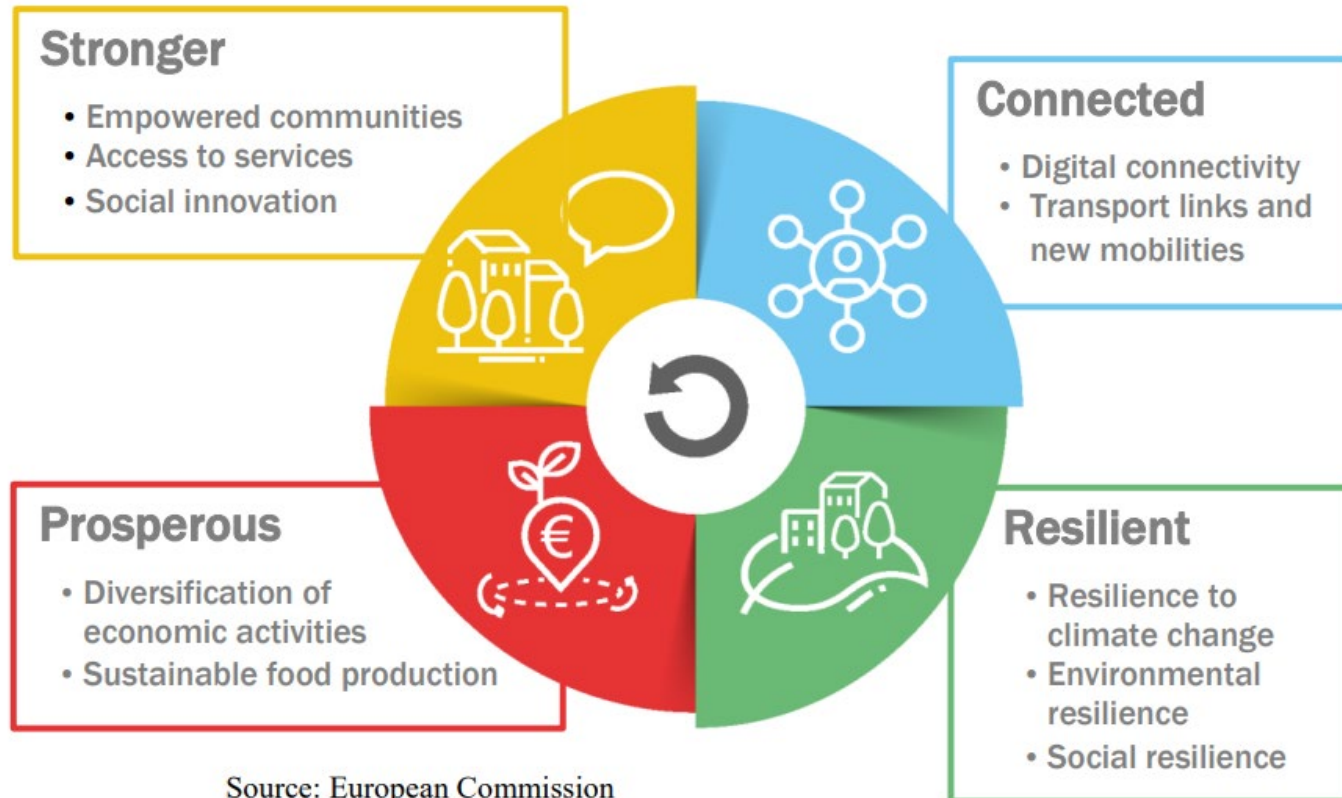
- Merge funds in a European Rural and Agricultural Policy
- Shift direct income support to farmers to development of rural infrastructure *

* *arc2020, article by Mathieu Willard, a CAP post-2027: An Integrated Rural and Agricultural Policy*



Our option for today: rural acceleration (1/2)

Recommendation: Use LTVRA building blocks to structure CAP Strategic Plans around four rural priorities



- National level framework
- Local level implementation

Each country should design strategies per building block with:

- A needs assessment
- Interventions to address identified needs
- Goals and targets



Our option for today: rural acceleration (2/2)

Ring-fencing for four rural interventions

- Each country guarantees at least a minimum budget to be allocated to each of four interventions supporting rural communities and rural areas
- Note: these interventions are not targeted at the farming sector





Participatory budgeting



Participatory budgeting

- A participatory process in which citizens allocate parts of a public budget via democratic deliberation and decision-making
- More than just consulting → effective participation with concrete results

Five steps:

1. Designing the participatory budgeting process
2. Brainstorming ideas
3. Developing proposals
4. **Voting on the proposals**
5. Funding the winning proposals/projects





SHERPA participatory budgeting

- Today's exercise: allocate €100 million of post-2027 EU budget for rural development following scenario '**rural acceleration**'
- SHERPA WP Leaders went through steps one to three to:
 - Design the participatory budgeting process
 - Brainstorm ideas
 - Develop proposals
- Today, we invite you to take step four of participatory budgeting:
 - **Voting on proposals** to allocate the available budget between the proposals



SHERPA participatory budgeting

- **Now**, four pitches will be given, one for each rural priority: Stronger, Connected, Resilient, and Prosperous rural areas
 - Following the pitches, you will be asked to use Menti to allocate the budget between the rural priorities based on the SHERPA community of which you are part
- **After the coffee break**, four pitches will be given on four rural interventions: LEADER, Rural Investments, Rural Skills, and Rural Communities
 - Following the pitches, create small groups (3 to 4) and jointly allocate the budget between the rural interventions, using Menti



Each proposal will be promoted in 5 minutes

What it is

SHERPA view

Image

SOCIAL DIMENSION OF RURAL AREAS
- Position paper -

DIGITALISATION IN RURAL AREAS
- Position paper -

CLIMATE CHANGE & ENVIRONMENTAL SUSTAINABILITY
- Position paper -

CLIMATE CHANGE AND LAND USE
- Position paper -

RESILIENT & SUSTAINABLE VALUE CHAINS
- Position paper -

CHANGE IN PRODUCTION AND DIVERSIFICATION OF THE RURAL ECONOMY
- Position paper -

FORESIGHT EXERCISE: ALTERNATIVE RURAL FUTURES
- Position paper -

RURAL POLICIES TO PROTECT AND ENHANCE BIODIVERSITY THROUGH LANDSCAPE FEATURES
- Position paper -

LONG-TERM VISION FOR RURAL AREAS
- Position paper -



Menti test for participatory budgeting

- You won an all-expenses paid holiday to Galicia, Spain!
- Part of the prize is a 100 Euro voucher for holiday activities
- How you would like to spend the voucher? Please allocate budget to the selected activities based on your preferences:
 - A food and wine tour, a guided tour of the Santiago de Compostela, a day tour to the Cies Islands, a hike in the Fragas Do Eume
- **Scan the QR Code or go to [menti.com](https://www.menti.com) and fill in the code** to respond to the question: *“How you would spend the 100 eurovoucher? Please allocate budget based on your preferences”*



Menti.com
4805 8304

