

# SHERPA

## Final Conference 2023



1-2 June 2023

Hosted by



**European Committee  
of the Regions**



SHERPA has received funding from the European Union's Horizon 2020 Research and Innovation Programme under Grant Agreement No. 862448. The content of the document does not reflect the official opinion of the European Union. Responsibility for the information and views expressed therein lies entirely with the author(s).

SESSION 2:  
Contribution to the wider policy framework



#SHERPAConference

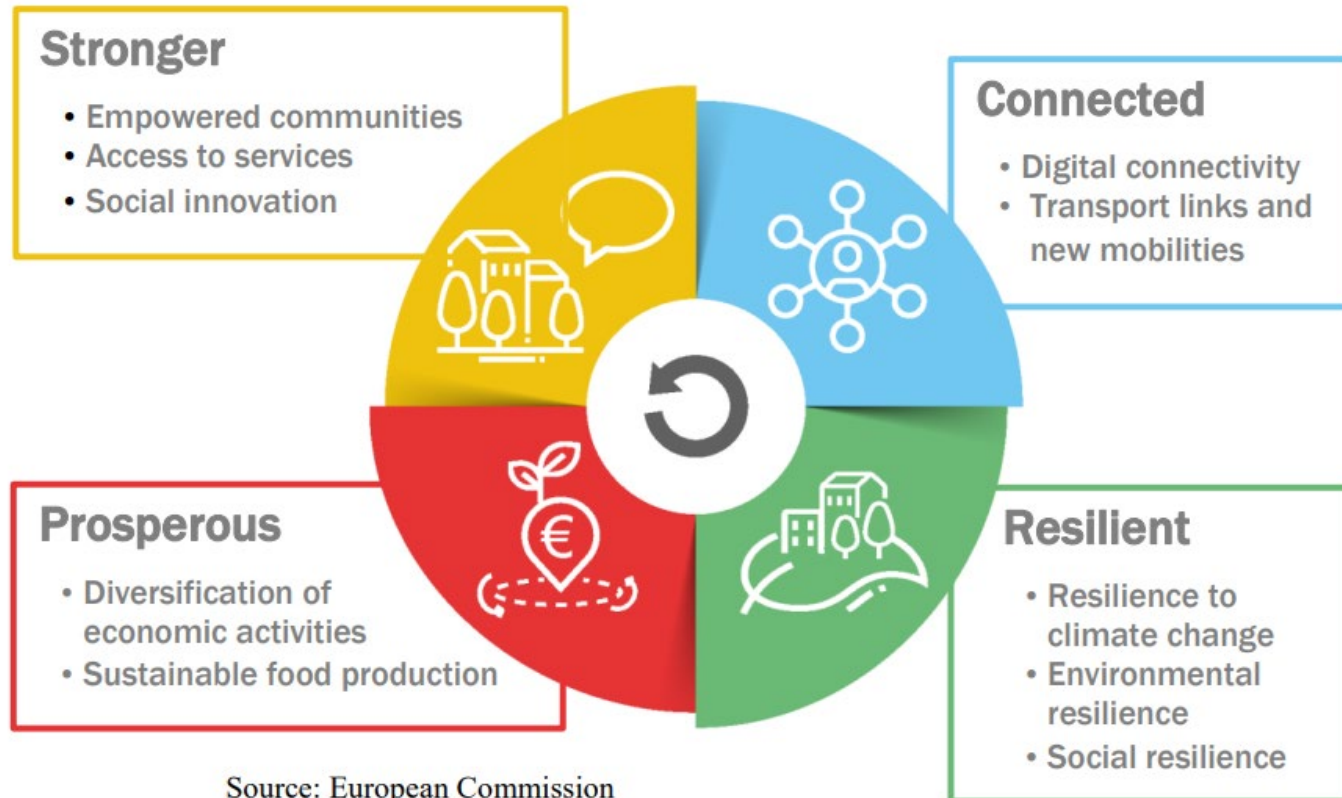


# Pitches on four rural priorities



# Our option for today: rural acceleration

## Recommendation: Use LTVRA building blocks to structure CAP Strategic Plans around four rural priorities



- National level framework
- Local level implementation

Each country should design strategies per building block with:

- A needs assessment
- Interventions to address identified needs
- Goals and targets



# Stronger Rural Areas

- Support to empower communities and access to services to facilitate:
  - social innovation
  - spatial planning
  - youth involvement



Bárbara  
Soriano

Universidad Politécnica de  
Madrid



# Why You Should Support Stronger Rural SHERPA View

- The depopulation trend in rural areas creates challenges and pressurises public services (e.g. health, social care for the elderly; childcare for young families) and reduces the proportion of economically active population
- Many skilled (young) rural innovators are waiting for an enabling environment to develop their innovations and contribute to closing the service gap in rural areas
- Stimulate new jobs via LTVRA flagship of Research and Innovation for rural communities (e.g. innovation hubs linked to investment in natural capital) and make rural areas attractive to professionals to settle with career prospects for entire family
- Increasing land competition in rural areas (e.g. energy transition) requires empowered and organised rural population for smart decision making on land-use planning
- Make the most of valuable social networks built by LAGs over the last 30 years through LEADER/CLLD to strengthen the social dimension of rural areas

“ Youths think differently about work, the environment, community, etc., they no longer see these from the perspective of traditional industrial society



# Why You Should Support Stronger Rural My View

**Let's invest to attract young, skilled  
and empowered rural innovators**

