

SHERPA

Final Conference 2023



1-2 June 2023

Hosted by



**European Committee
of the Regions**



SHERPA has received funding from the European Union's Horizon 2020 Research and Innovation Programme under Grant Agreement No. 862448. The content of the document does not reflect the official opinion of the European Union. Responsibility for the information and views expressed therein lies entirely with the author(s).

SESSION 2:

Contribution to the wider policy framework



#SHERPAConference

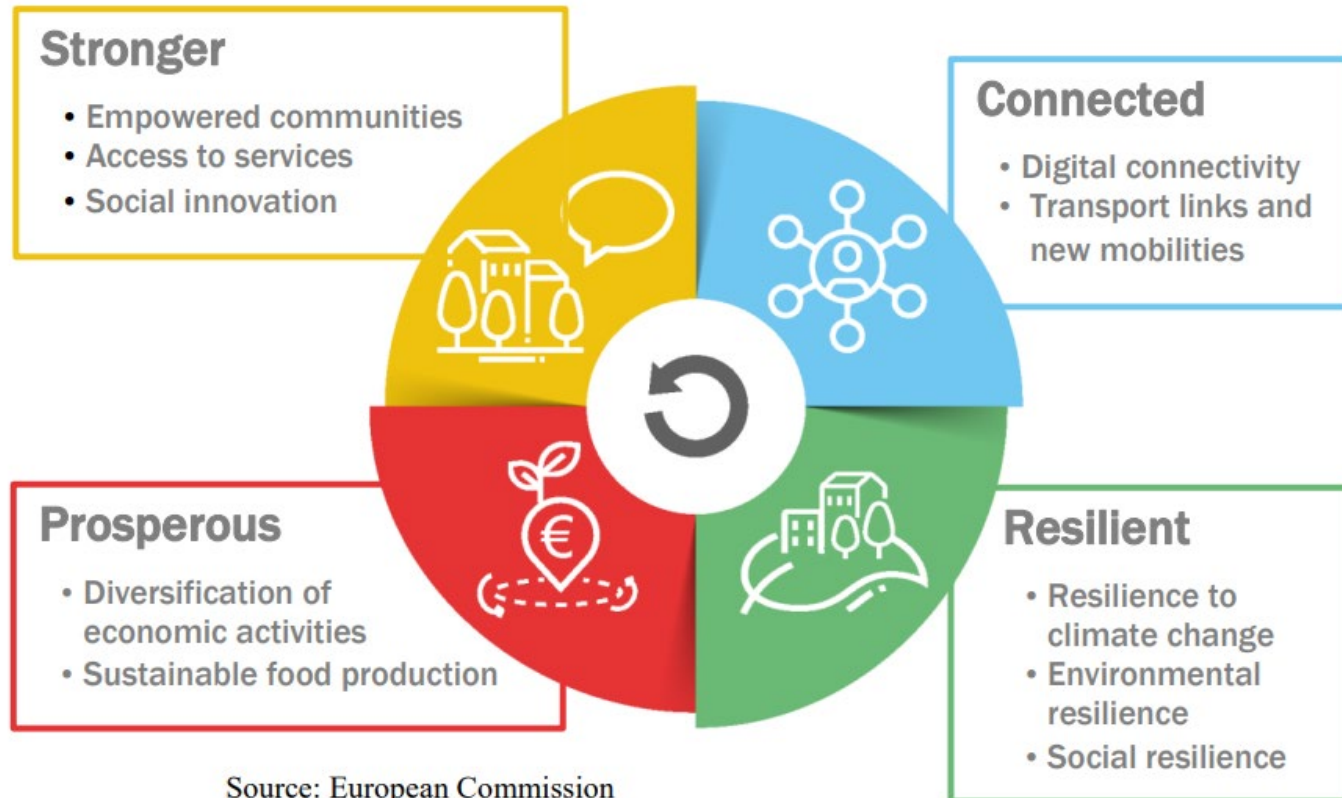


Pitches on four rural priorities



Our option for today: rural acceleration

Recommendation: Use LTVRA building blocks to structure CAP Strategic Plans around four rural priorities



- National level framework
- Local level implementation

Each country should design strategies per building block with:

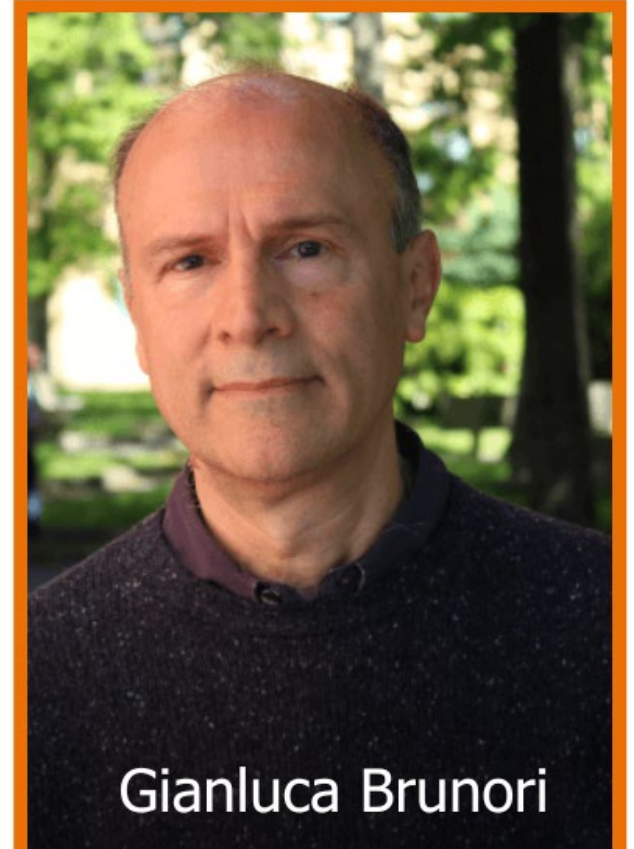
- A needs assessment
- Interventions to address identified needs
- Goals and targets



Connected Rural Areas

- Boost sustainable transport links and digitalisation through investments in:
 - infrastructure
 - technology development
 - skills enhancement

Skills
Multi-modal
Infrastructures
E-mobility
Connectivity
Technologies
Mobility
Digital
Broadband
Urban-rural
Linkages
Transport
Cycling
Innovation
Connected



Gianluca Brunori

University of Pisa



Why You Should Support Connected Rural SHERPA View

- Digitalisation in rural areas is weaker than urban areas (i.e. infrastructure, human capital)
- COVID-19 has increased the digital divide and digital poverty, with low-skilled and vulnerable groups particularly at risk
- Digital solutions can make rural areas attractive places for residents and tourist.
- Digital tools and channels can transform societal governance and government engagement with citizens

“

In 2040, rural areas will seize the opportunity of digitalisation as a wide array of tools to answer residents and businesses' needs

Tuscany MAP (Italy)



Why You Should Support Connected rural areas

My View

