

SHERPA

Final Conference 2023



1-2 June 2023

Hosted by



**European Committee
of the Regions**



SHERPA has received funding from the European Union's Horizon 2020 Research and Innovation Programme under Grant Agreement No. 862448. The content of the document does not reflect the official opinion of the European Union. Responsibility for the information and views expressed therein lies entirely with the author(s).

SESSION 2:
Contribution to the wider policy framework



#SHERPAConference

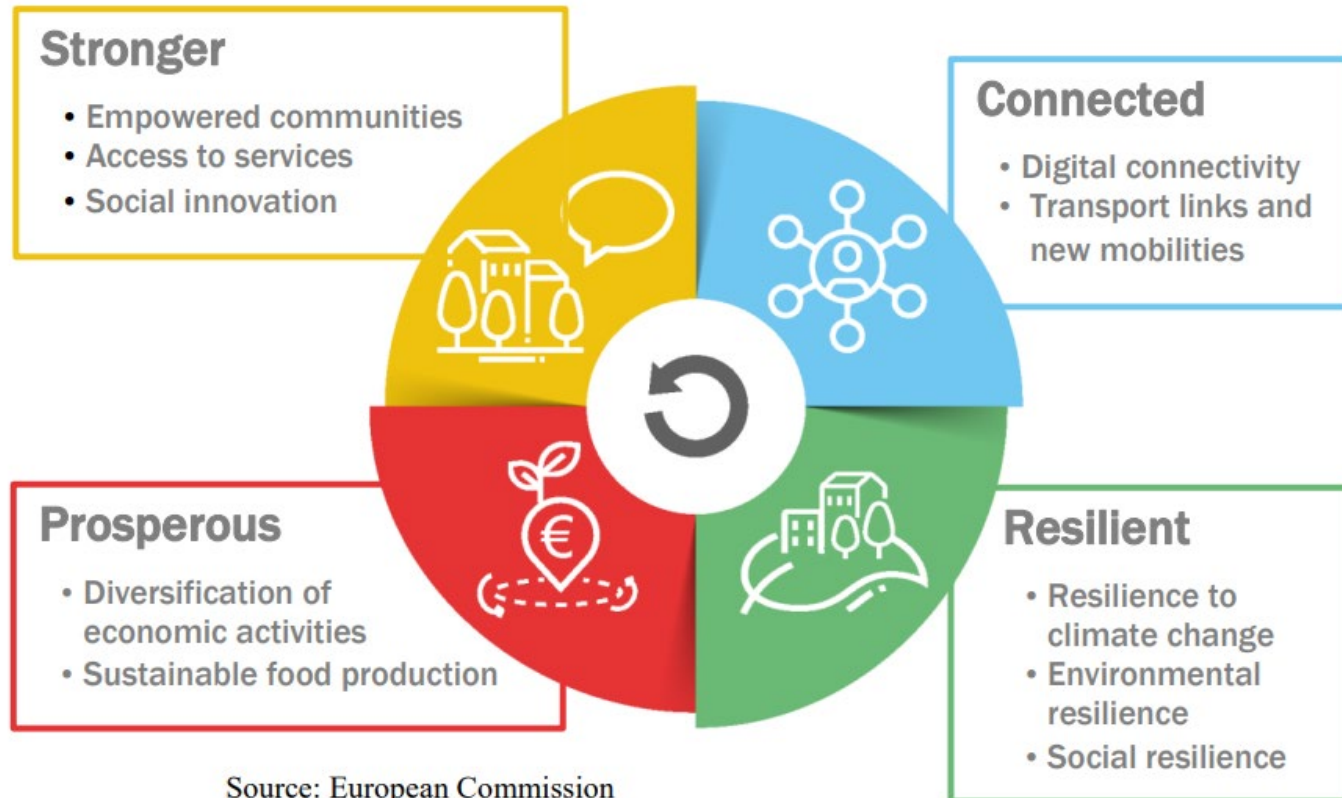


Pitches on four rural priorities



Our option for today: rural acceleration

Recommendation: Use LTVRA building blocks to structure CAP Strategic Plans around four rural priorities



- National level framework
- Local level implementation

Each country should design strategies per building block with:

- A needs assessment
- Interventions to address identified needs
- Goals and targets



Prosperous Rural Areas

- Support for the social economy
- Addressing needs of young people
- Promoting a bioeconomy
- Support producer organisations and producer groups



Živilė Gedminaitė-
Raudonė

Lithuanian Centre for
Social Sciences



Rita Lankauskienė

Lithuanian Centre for
Social Sciences



Why You Should Support Prosperous Rural SHERPA View

- Young people are a key pool of talent, however provision of education and professional training is weak in many rural areas
- Employment and economic activities depended upon, but are sensitive to, the interlinked support between different business sectors
- Rural municipalities with significant forest resources, and potential for its expansion, have a major role to play in developing bio-economies
- Cooperatives, partnerships and producers organisations are essential to strengthening the position of farmers in the supply chain, and providing collective support, but trust amongst actors can be low

“ A widespread understanding of the valuable contributions rural areas have for the economy, prosperity and welfare is central to our vision